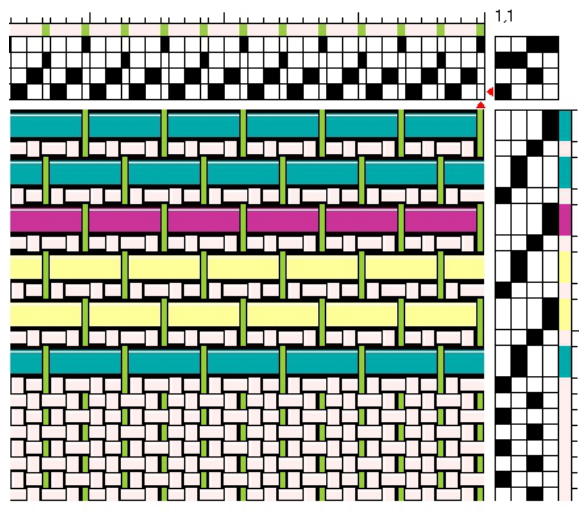


Theo Moorman Tapestry Technique on the four harness loom

Characteristics of the woven cloth are a solid ground with inlaid areas held down by a tie down warp. This structurally solid tabby weave has an advantage of an added background not found in traditional tapestry. The disadvantage is the tremendous number of warp ends. For 3/2 pearl cotton, the 50/50 plain weave is 12 ends per inch. Theo Moorman technique needs 18 e.p.i.



THREADING	TREADLING
1, 2 (ground threads)	lift shafts 1&3, throw ground weft
3 (thin tie-down thread)	lift shaft 3, place inlay weft
1, 2 (ground threads)	lift shafts 2&4, throw ground weft
4 (thin tie-down thread)	lift shaft 4, place inlay weft

Sley threads in 12 dent reed 1,2,1,2....Plan 10" width in loom, with 180 threads, approximately 2 yards long. This will give you room to experiment. Insert in the shed single, double or triple yarn. Try two needle, soumac or rya knot techniques. Special thanks to Eve Stossel's blog. Have FUN, Janet Griffin